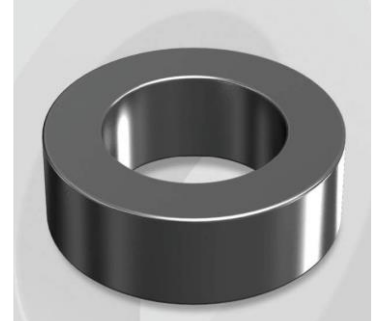


# CH270060GT18

## Electrical Characteristics

Material	Permeability ( $\mu$ )	AL $\pm$ 8% (nH/N <sup>2</sup> )	DCB (% min) @ 100 Oe	Coreloss (mW/cm <sup>2</sup> , max) @ 50kHz, 1000G
High Flux GT	60	120	77.4	180

OD : 270



## Core Dimensions

Dimensions		Uncoated		Coated		Color	Packaging
		(mm)	(inch)	(mm)	(inch)		
OD	(Max)	26.92	1.060	27.70	1.091	Black	Box Qty = 252 pcs
ID	(min)	14.73	0.580	14.10	0.555		
HT	(max)	18.00	0.709	19.00	0.748		

## Physical Characteristics

Cross Section (A)	Path Length ( $\ell$ )	Window Area (Wa)	Volume (V)	Breakdown Voltage (Vac)
1.052 cm <sup>2</sup>	6.35 cm	1.56 cm <sup>2</sup>	6.680 cm <sup>3</sup>	1,000
0.163 in <sup>2</sup>	2.500 in	307,874 cmil	0.4076 in <sup>3</sup>	

## Winding Information

0% Winding length/turn (cm)		
5.16		
40% winding factor Surface Area (cm <sup>2</sup> )		
43.31		
40% Wound Di.(mm)		
OD	ID	HT
31.16	9.23	23.17

## Typical DC Bias Performance

